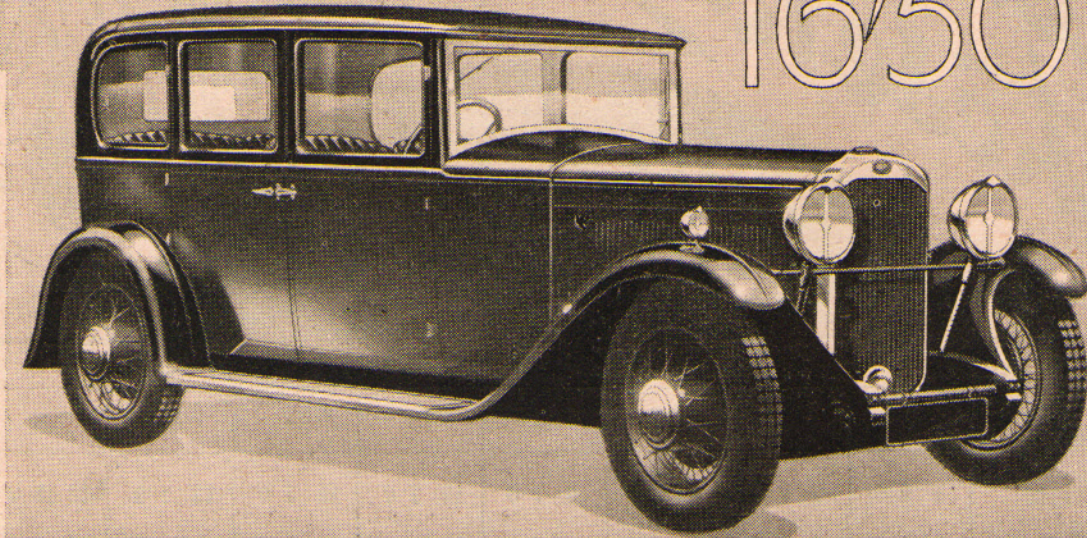


# HUMBER

## 16/50



## THE BEST CAR ..... in the £400 class

When you inspect the Humber "16/50," bear in mind the qualities you want in your new car.

Do you want it for work in town? Take the Humber through traffic; see how it crawls along in 'top,' note the effortless acceleration in 'Silent Third' when the block breaks; test the smooth power of its brakes.

Do you want it for fast touring? Take it out on the open road; watch the needle

creep up; cruise for mile after mile at an effortless high average speed.

Notice the lavish equipment of the Humber — its luxurious upholstery and armchair comfort for driver and passengers; its ample leg and head room; the beauty of its flowing lines.

Humber's modern methods of production have alone made it possible to build cars of such high quality at so reasonable a cost.

**HUMBER "16/50"**

models from . £395

**HUMBER "SNIPE"**

models from . £455

**HUMBER "PULLMAN"**

models from . . . £695

*Triplex Glass. Prices Ex Factory. All Humber Cars can be bought on a special scheme of extended payments.*

HUMBER LIMITED, COVENTRY.

London Service Depot: - - - - - Canterbury Road, Kilburn, N.W.6.

London Showrooms and Export Department: Rootes Ltd., Devonshire House, Piccadilly, W.1.

*Every Humber owner should read "Modern Motoring." Price 4d. monthly; from all bookstalls. 6/6 per annum post free.*



## AGAIN — SUCH CARS AS EVEN HUMBER NEVER BUILT BEFORE